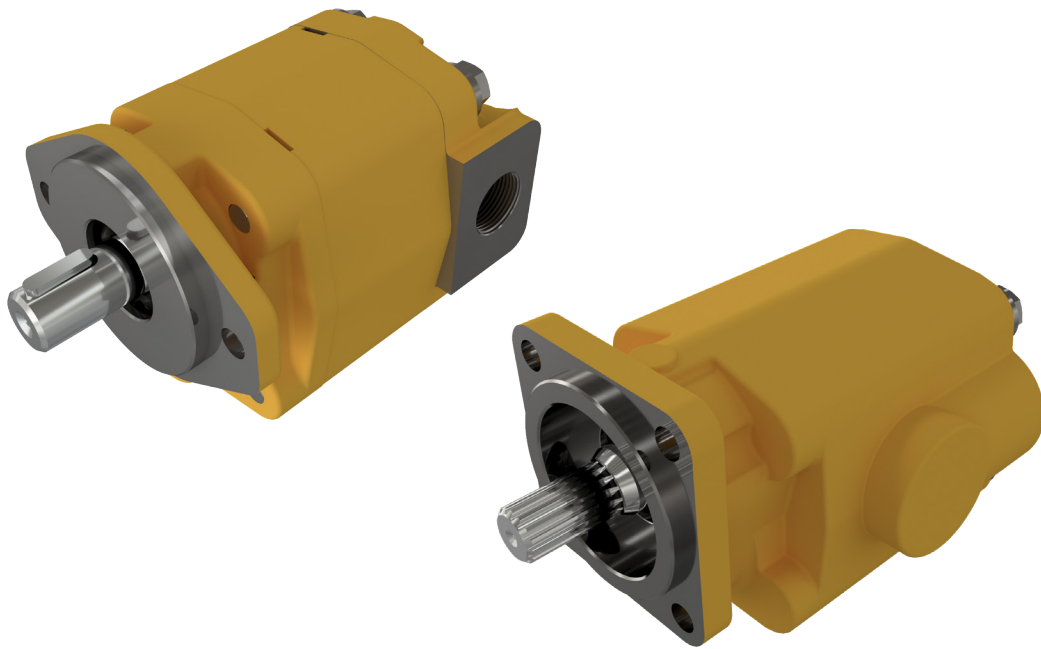




CAST IRON GEAR PUMPS CATALOG



INNOVATIVE MOBILE SOLUTIONS
DESIGN ▼ MANUFACTURE ▼ INTEGRATE

1 877 382-2850 EAGLE-HYDRAULIC.COM



INNOVATIVE MOBILE SOLUTIONS

Eagle Hydraulic Inc. is a Canadian based manufacturer of custom and standard hydraulic solutions.

We manufacture hydraulic cylinders, hydraulic power units and pumps as well as engineer and integrate more than 500,000 other hydraulic components such as motors, valves, manifolds, and many more options.

Serving the mobile equipment industry for decades, our products are designed and supported from our head office located in Mirabel, Quebec, Canada to exceed North American standards.

We own and operate two hydraulic cylinder manufacturing facilities located in China. Our manufacturing operations are certified ISO TS16949. We are also a certified OEM production supplier to many large North American based corporations.

Our services include custom components or system design, on-site visits, continuous support, flexible delivery and stocking programs, inventory updates, many warranty options, and responsive service.

We strive to provide you the best experience and deliver high-quality merchandise faster than expected.

Eagle Hydraulic adds value through innovation, quality, respect, commitment, loyalty, and teamwork.

OUR CAPABILITIES

1

OEM HYDRAULIC CYLINDERS

2

STANDARD HYDRAULIC CYLINDERS

3

HYDRAULIC POWER UNITS

- AC
- DC

4

HYDRAULIC COMPONENTS

- Pumps
- Motors
- Valves
- Tanks
- Toolboxes
- Manifolds
- Filters
- Remotes
- Wireless controllers
- ...

5

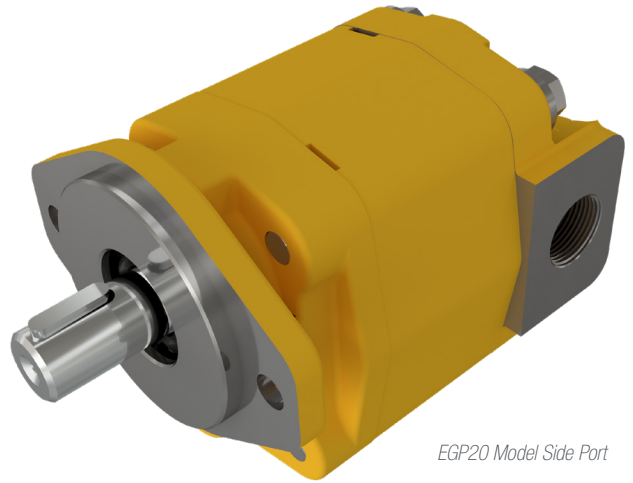
SYSTEM INTEGRATION

6

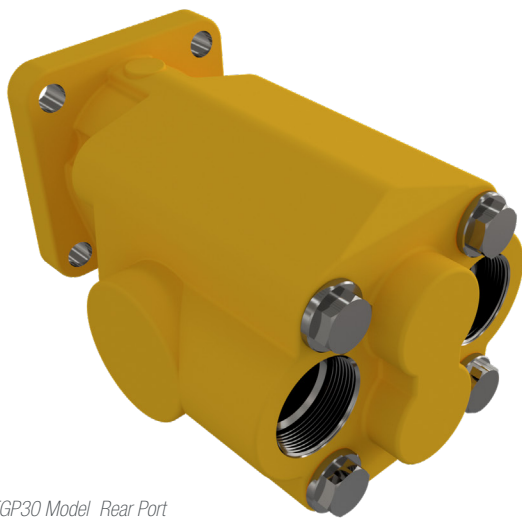
NEW: NOVAPEAK

FEATURES

- ▶ Heavy duty pump in a compact and low weight design.
- ▶ Output shaft bushing is made with a polymer allowing for a wide speed range and good anti-wear characteristics even with dry start-ups.
- ▶ Copper alloy, pressure balanced floating thrust plate ensures adequate oil film for proper sealing and lubrication.
- ▶ Volumetric and mechanical efficiency even when working pressures surpass allowable limits.
- ▶ SAE ORB porting standard with SAE flange porting optional.
- ▶ Outboard bearing option available.
- ▶ Rear & Side ports available.
- ▶ 100% factory tested.



EGP20 Model Side Port



EGP30 Model Rear Port

GUARANTEE

Eagle Hydraulic provides a **three years warranty** if used in accordance with the approved application and operating conditions. Pumps should be mounted on a rigid base in line with the drive. Before starting the pump, check the pump unit has been assembled correctly for the required direction flow and shaft rotation.

HYDRAULIC FLUIDS

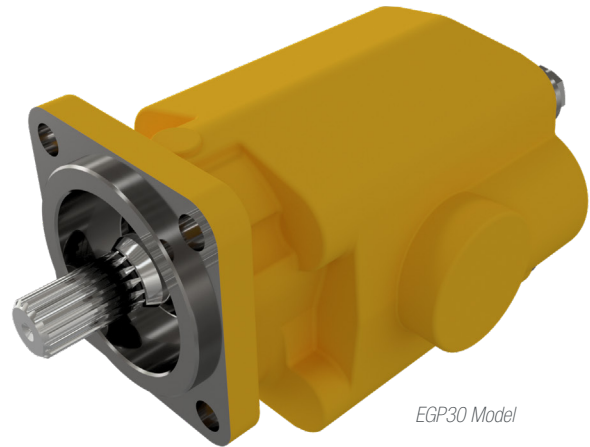
Use mineral oil based hydraulic fluids having good antioxidant, anti-foaming, anti-wear, anti-corrosion and lubricating properties. Optimum operating viscosity is considered to be 31 cSt to 65 cSt (150-300 SUS) at 38°C. Acceptable operating viscosity range is 16 to 220 cSt (80-1000 SUS) max. start up viscosity should not exceed 890 cSt (4000 SUS).

OPERATING

Under continuous operation, fluid temperature should not exceed 65°C (150°F). The optimum oil operating temperature is in the range of 47°C to 53°C (117-127°F).

INLET PRESSURE

Inlet pressure should not exceed 2.5 PSI.

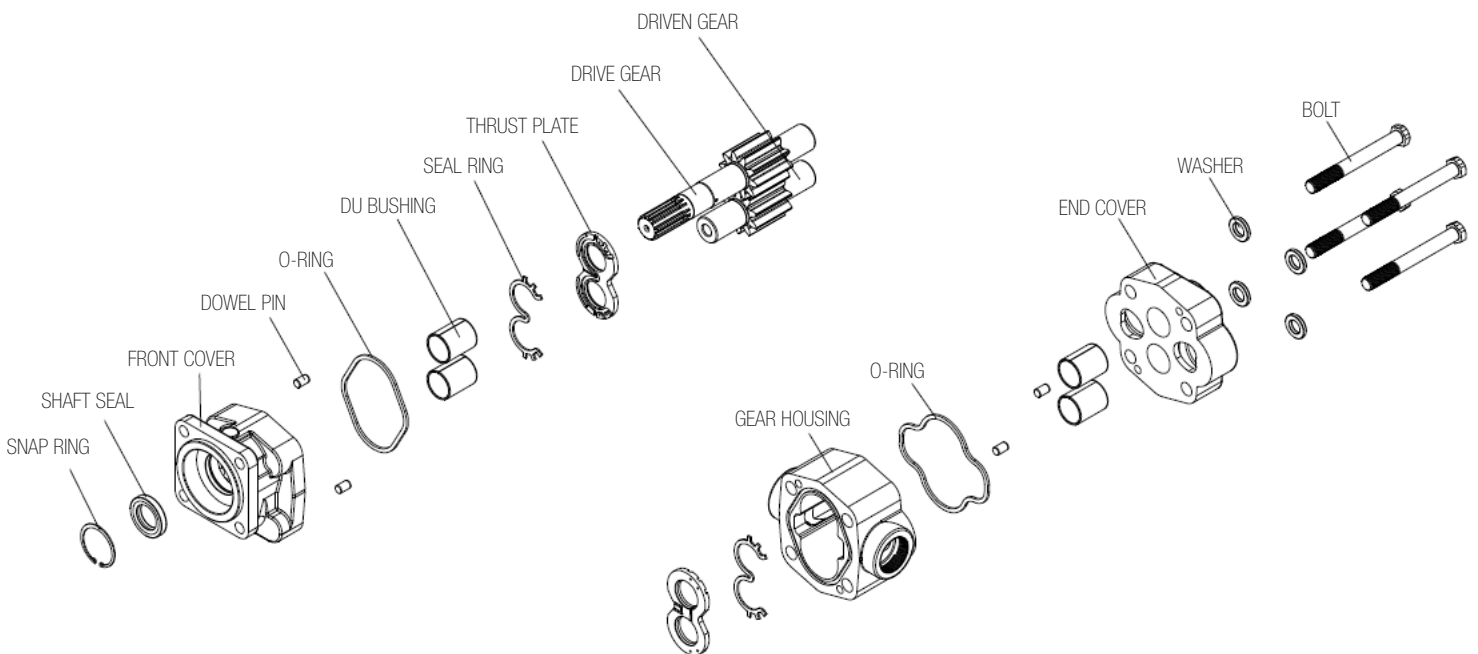


EGP

FILTRATION

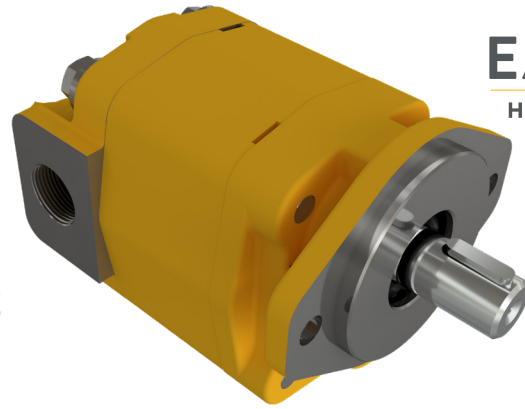
Working Pressure	< 2000PSI (140bar)	3000PSI (210bar) - 4000PSI (275bar)
Contamination class ISO 4406	20 / 18 / 15	19 / 17 / 14

EXPLODED VIEW



FEATURES

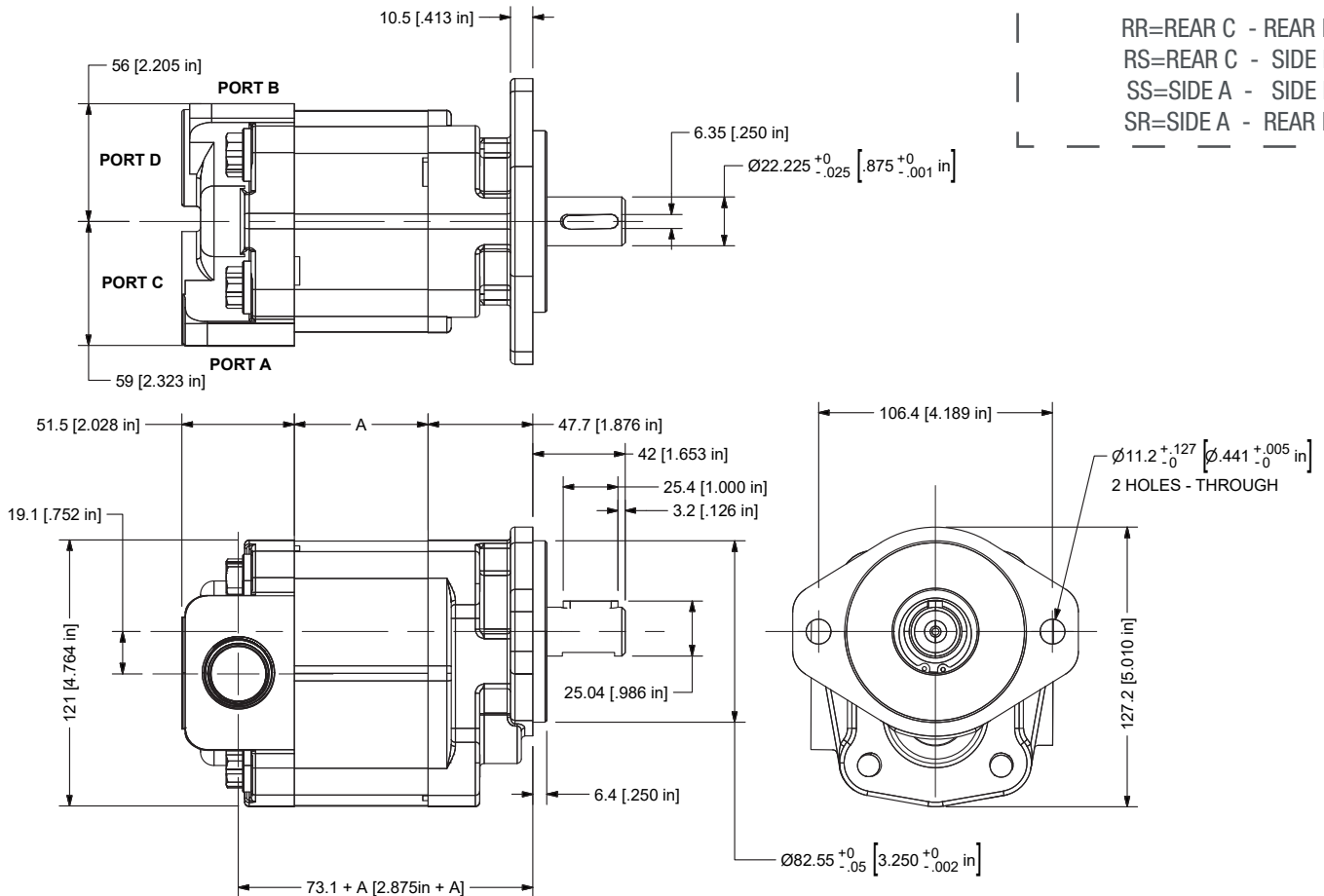
- ▶ SAE "A" 2-BOLT FLANGE
- ▶ SAE "AH" KEYED SHAFT
- ▶ STANDARD IS CLOCKWISE ROTATION AND 4 PORTS CONFIGURATION (HAS SIDE & REAR PORTS)
- ▶ DISPLACEMENTS FROM 10 TO 40 CC/REV AVAILABLE
- ▶ OUTBOARD BEARING AVAILABLE
- ▶ WE ONLY STOCK MOST COMMON VARIANTS



EGP20

DIMENSIONS

Main dimensions in mm [Inch between bracket]



*Can be ordered custom as per following port configuration:

- RR=REAR C - REAR D
- RS=REAR C - SIDE B
- SS=SIDE A - SIDE B
- SR=SIDE A - REAR D

PERFORMANCE DATA

* Displacements from 10-40 are available upon requests.

	NOMINAL DISPLACEMENT (cuin/rev) [cc/rev]	THEORETICAL DISPLACEMENT (cuin/rev) [cc/rev]	WORKING PRESSURE (PSI) [bar]	WORKING ROTATION (rpm)	A mm [in]	PORTS (A,B,C,D)
EGP20-25	1.5 [25]	1.52 [25.5]	3625 [250]	1000 - 3000	41.9 [1.650]	SAE#16
EGP20-30	1.8 [30]	1.83 [30.6]	3045 [210]		48.0 [1.890]	SAE#16
EGP20-35	2.2 [36]	2.14 [35.7]	2610 [180]		54.5 [2.146]	SAE#16



EGP20 ORDER INFORMATION

2 - 3 - 4 - 5 - 6 - 7 - 8 - 9

EGP20 - - - - - - -

1	2	3	4	5	6	7	8	9											
CODE	Displacement cm ³ /rev [in ³ /rev]	Flange		Shaft		Inlet Ports		Outlet Ports		Port position [intake-outlet]		Direction		Options					
010	10.2 [0.62]	A	SAE A 2 bolt flange	D	SAE AH 3/4" keyed shaft, key 4.8x4.8x22.2	P	SAE 16 (1 5/16-12UN- 2B) ORB	M	SAE 10 (7/8-14UNF- 2B) ORB	00	All ports	0	Clockwise	0	No option				
015	15.3 [0.93]									R	SAE 20 (1 5/8-12UN-2B) ORB	N	SAE 12 (1 1/16-12UN- 2B) ORB	RR	Rear-Rear	S	Counter- clockwise	T	Outboard Bearing
020	20.4 [1.24]									RS	Rear-Side	B	Bi- direction						
025	25.5 [1.56]									SS	Side-Side								
030	30.6 [1.87]									SR	Side-Rear								
035	35.7 [2.18]																		
040	40.8 [2.49]																		

EGP20

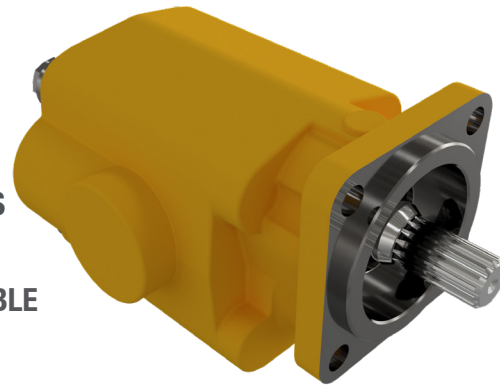
NOTES:

- From the order information table, please choose the right code for displacement, flange, shaft, inlet & outlet ports, port position, direction and options. If the specification is not in the table or you have specific requirements, please contact us.



FEATURES

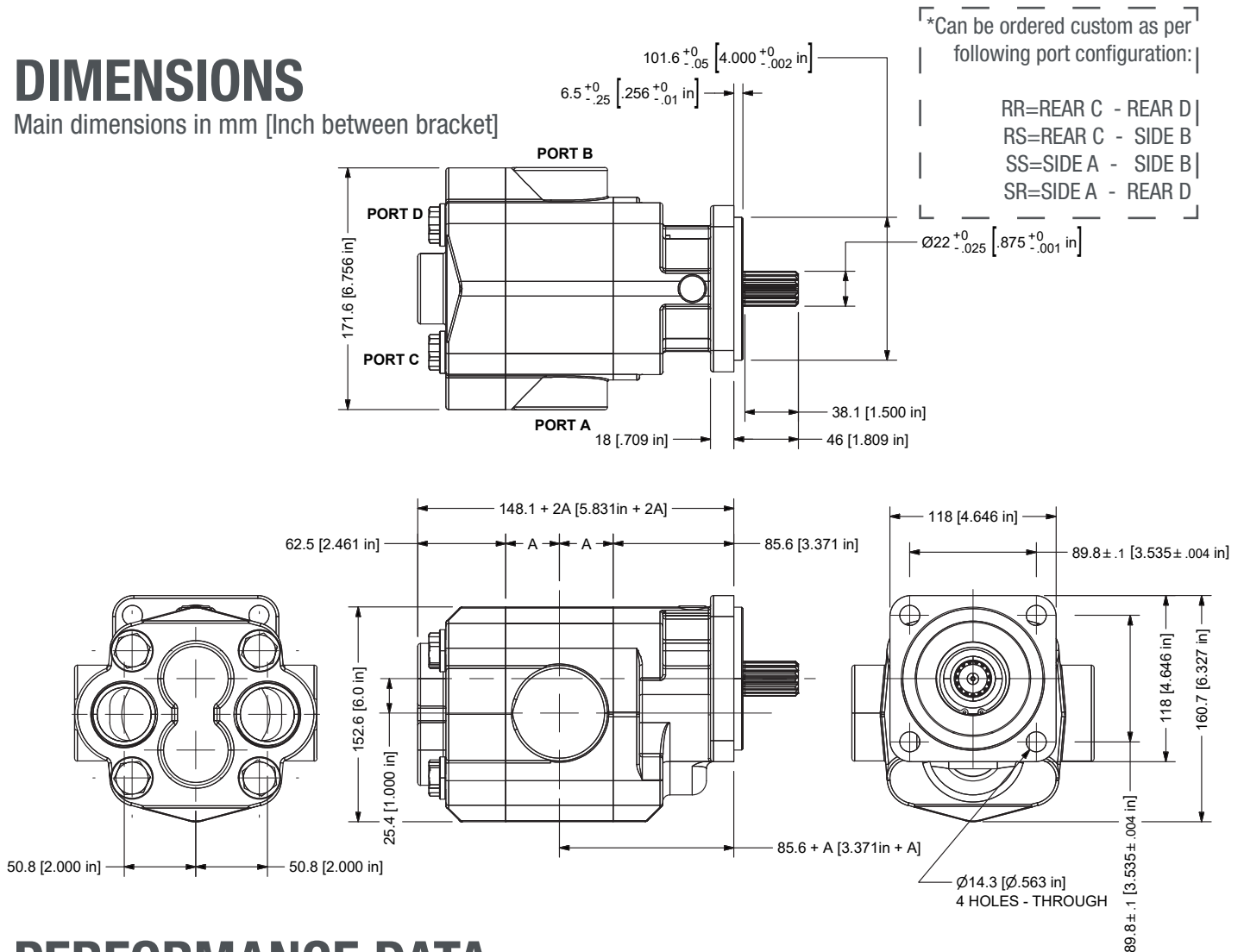
- ▶ SAE "B" 2-BOLT & 4-BOLT FLANGE AVAILABLE
- ▶ SAE B, BB AND C SPLINED SHAFTS AVAILABLE
- ▶ STANDARD IS CLOCKWISE ROTATION AND 4 PORTS CONFIGURATION (HAS SIDE & REAR PORTS)
- ▶ DISPLACEMENTS FROM 42 TO 105 CC/REV AVAILABLE
- ▶ WE ONLY STOCK MOST COMMON VARIANTS



EGP30

DIMENSIONS

Main dimensions in mm [Inch between bracket]



PERFORMANCE DATA

* Displacements from 42-105 are available upon requests.

	NOMINAL DISPLACEMENT (cuin/rev) [ml/rev]	THEORETICAL DISPLACEMENT (cuin/rev) [cc/rev]	WORKING PRESSURE (PSI) [bar]	WORKING ROTATION (rpm)	A mm [in]	PORTS (A, B, C, D)
EGP30-60	3.8 [63]	3.84 [63.7]	3625 [250]	1000 - 2400	25.4 [1.000]	SAE#16
EGP30-90	5.8 [95]	5.74 [94.6]	2610 [180]		31.8 [1.250]	SAE#24
EGP30-100	6.4 [105]	6.41 [105.6]	2610 [180]		38.1 [1.500]	SAE#24



EGP30 ORDER INFORMATION

2 3 4 5 6 7 8 9
EGP30 - - - - - - -

1	2	3	4	5	6	7	8	9
CODE	Displacement cm ³ /rev [in ³ /rev]	Flange	Shaft	Inlet Ports	Outlet Ports	Port position [intake-outlet]	Direction	Options
040	41.8 [2.55]	B SAE B 2 bolt flange	E SAE B spline 7/8"-13T	P* SAE 16 (1 5/16-12UN-2B) ORB	P* SAE 16 (1 5/16-12UN-2B) ORB	00 All ports	0 Clockwise	0 No option
050	52.8 [3.22]	C SAE B 4 bolt flange	F SAE BB spline 1"-15T	R SAE 20 (1 5/8-12UN-2B) ORB	R SAE 20 (1 5/8-12UN-2B) ORB	RR Rear-Rear	S Counter-clockwise	
060	63.7 [3.89]	D SAE C 4 bolt flange	G SAE C spline 1-1/4"-14T	O SAE 24 (1 7/8-12UN-2B) ORB	O SAE 24 (1 7/8-12UN-2B) ORB	RS Rear-Side	B Bi-direction	
070	73.7 [4.50]			S SAE 20 J518 Code 61 flange	S SAE 20 J518 Code 61 flange	SS Side-Side		
080	83.6 [5.10]			T SAE 24 J518 Code 61 flange	T SAE 24 J518 Code 61 flange	SR Side-Rear		
090	94.6 [5.77]							
100	105.6 [6.44]							

EGP30

NOTES:

- From the order information table, please choose the right code for displacement, flange, shaft, inlet & outlet ports, port position, direction and options. If the specification is not in the table or you have specific requirements, please contact us.

* Port sizing if using 2 ports per side on 40, 50, 60. Do not use on larger displacement pumps.

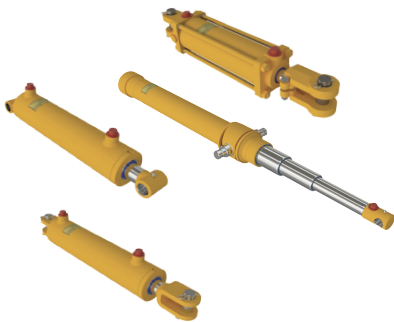




EAGLE IS NOT ONLY A HYDRAULIC CYLINDER MANUFACTURER

We can provide more than 500,000 unique hydraulic solutions.
Tell us about your needs!

STANDARD AND CUSTOM HYDRAULIC CYLINDERS

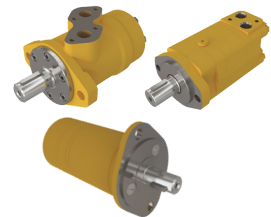


POWER UNITS

- AC - DC



HYDRAULIC MOTORS



INDUSTRIES WE SERVE:

AERIAL TRUCK • AGRICULTURE • MATERIAL HANDLING • TRUCK & TRAILER
AUTO LIFT • CONSTRUCTION • SNOW EQUIPMENT • WASTE & REFUSE

A Canadian Owned & Operated Company 



12055 Arthur-Sicard, Mirabel, Québec, Canada, J7J 0E9

Phone: 1 450 433-2800 / 1 877 382-2850

Fax: 1 450 433-3004 / 1 877 382-2853

eagle-hydraulic.com